

6 Additional functions and setting method

Welcome Function

When a user stands close to the door lock, the keypad is automatically displayed, and keytag and fingerprint sensor areas also enter authentication standby mode. Welcome function is enabled by default. By adding an additional welcome function and a security mode, the alarm goes off following the voice guidance when someone stands in front of the door lock for more than a minute.

Dual Authentication Function

When configured, the user must consecutively authenticate both password and fingerprint to open the door. This function is recommended for those who want better security, such as those living on the first floor or in an apartment house with corridor access. Dual authentication mode can only be configured (enabled) when more than one fingerprint has been registered. Dual authentication function is disabled by default.

Auto Lock Time Setting Function

The user can set the auto lock time. Jammed deadbolts can be prevented by adjusting the auto lock time as necessary.

Voice Guidance

A voice provides assistance regarding the door lock operation status. Voice guidance function is enabled by default.

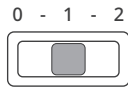
Wi-Fi Configuration Function

When the Wi-Fi module has been equipped on the door lock, the Wi-Fi function is enabled by default. App-based services cannot be used when this function is disabled. It is recommended to disable the Wi-Fi function if the mobile app is not being used. (Can reduce battery consumption)

Volume Settings

The user can configure the volume for system sound, keypad entry sound, voice guidance, etc. when opening the door. Open the battery cover on the interior unit to adjust the volume through the volume control switch. It is configured as [1] by default.

[0] Mute (Alarm excluded) [2] Max. volume



Refer to the following table to configure or disable other additional functions.

Open the wireless module cover on the interior unit and press the [Register] button. Press the exterior keypad security button (Ⓢ) according to the voice guidance to enter configuration mode. Select a function to use according to the voice guidance, and press the **Register button on the interior unit to suspend configuration before completion.** ※ Door is not locked even if the door has been closed within default time (within 1 minute) in configuration mode.

| | |
|--|------------|
| To activate Welcome function and Security mode | > > > |
| To activate Welcome function (default) | > > > |
| To deactivate Welcome function | > > > |
| - Detection range: close range setting | > > > > |
| - Detection range: middle range setting (default) | > > > > |
| - Detection range: long range setting | > > > > |
| To activate Randomizer (default) | > > > |
| To deactivate Randomizer | > > > |
| To activate Dual Authentication | > > > |
| To deactivate Dual Authentication (default) | > > > |
| Door closing time (default / 1 sec) | > > > |
| To activate Voice Guidance (default) | > > > |
| To deactivate Voice Guidance | > > > |
| To activate interior lever single-touch mode (default) | > > > |
| To activate interior lever multi-touch mode | > > > |
| To deactivate interior lever touch mode | > > > |
| To activate Wi-Fi (default) | > > > |
| To deactivate Wi-Fi | > > > |
| WPS mode | > > > |

| |
|--|
| References |
| • Recognition distance may vary in an environment exposed to sunlight or intense light. |
| • When configuring (enabling) the welcome mode in houses with corridors exposed to sunlight or houses with lighting on permanently, be mindful that the door lock system will automatically sound the alarm when this function is used. |
| • What is WPS (Wi-Fi protected setup)? This is a function designed for app users. After completing Wi-Fi registration and when the wireless router must be changed during use, you can connect to security settings via Wi-Fi for easy configuration without a complex configuration process. This mode can only be used in an environment that can support a WPS wireless router. Refer to the wireless router User Manual for WPS instructions for the wireless router. Wireless router can only be used normally after registering Wi-Fi again when the wireless router does not support WPS. |

7 How to use security function

Randomizer Function

Enter two random digits and then enter the password for authentication to prevent password leak.

Away mode Function

Away mode button (Ⓢ) is turned on when the door is locked after the user leaves the house. Press the away mode button (Ⓢ) within 3 seconds to configure (enable) the function. After the function is enabled when leaving the house, the alarm goes off as the external alarm LED flashes when the door is opened from the inside. It is recommended to only use this function when there is no one home.



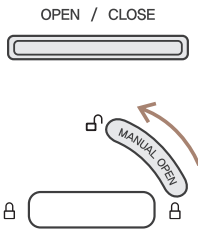
Privacy mode Function

This function is configured when all family members have returned home in the evening, or to protect personal privacy. It can restrict the door from being opened from the outside. The door lock cannot be opened through any authentication method from the outside when this function is enabled. Be careful not to configure this function when a child is present indoors.

※ Only use this function when there is a person at home when configuring (enabling) this function through the mobile app.

Configure :

Press the [OPEN / CLOSE] button on the interior unit for 3 seconds with the door lock being locked to enable the function.



Disable :

The function is immediately disabled by pressing the [OPEN / CLOSE] button on the interior unit shortly or by turning the manual door lock to [Ⓢ].

Anti-Tampering Function

(Door lock operation is suspended for 3 minutes when authentication fails 5 consecutive times.)

The alarm goes off when operated incorrectly from the outside (outdoor) and the door lock operation is suspended. The door lock triggers a failure alarm and its operation is suspended for 3 minutes (cannot be used) after failing authentication 5 times consecutively. (Password, fingerprint, keytag, mobile key authentication failure)

Intrusion Detection Function (※ Default function and cannot be disabled)

The door lock triggers the alarm when the door is forcefully opened from the inside / outside. The door opening sensor detects an intrusion and the alarm goes off for 5 minutes when the door is forcefully opened with the door lock being locked.

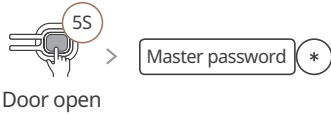
High Temperature Alarm Function (※ Default function and cannot be disabled)

The alarm system is activated with the temperature sensor reacting to an abnormal increase in indoor temperature (approx. 70°C +/-10°C). LED on the [DOUBLE LOCK] button on the interior unit flashes as the alarm is triggered for 15 seconds. The door lock is automatically disabled after the alarm is turned off. (The door lock is restored to normal operational state when the indoor temperature drops to a certain temperature)

8 Initialization

Initialize the Linked Information (Wi-Fi / Remote Controller)

Wi-Fi : It resets the mobile key and Wi-Fi registration information. (Master password, user password, fingerprint, and keytag information are maintained.)



Remote controller : It resets the registration information (to be purchased separately)

Initialize the key information

Password is reset to "1234" and all registered fingerprints, keytags, and app information are deleted.



| | |
|----------------|---|
| TIP | What is reset? It is a function to perform factory reset for all information configured for the door lock. |
| Caution | Password is changed to '1234' after reset. You must change the password afterward. |

9 How to replace the battery and open the door during an emergency

Battery Replacement

Replace the batteries immediately if the voice guidance is activated after the battery replacement alarm (LED) is turned on. Continuing to use without replacing the batteries on time may result in the door lock shutting down due to lack of battery power. Replace the batteries by pushing the interior unit cover upwards to remove the cover.



| | |
|----------------|--|
| Caution | • Battery use time may vary depending on the battery manufacturer, manufacturing date, and environment of use. (8 alkaline batteries (1.5V AA) can be used for 10 months when used 10 times per day ; use time may be less than 10 months when managed by the mobile app.) • Regularly check the battery state (6 months is recommended) to prevent damage to the product from battery leak. • When the battery replacement alarm goes off, some functions such as entering registration mode or configuration mode may be restricted until the batteries are replaced. • When the battery replacement alarm goes off, do not use previously used batteries. Immediately replace all the batteries with new ones. |
|----------------|--|

Emergency Door Open

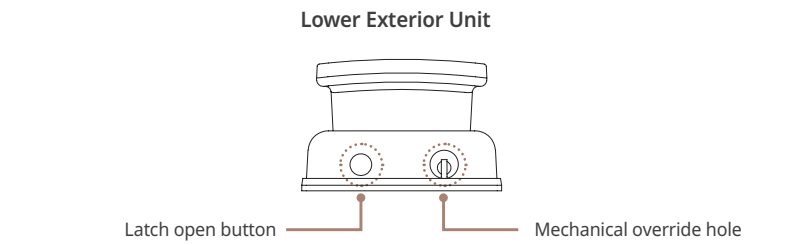
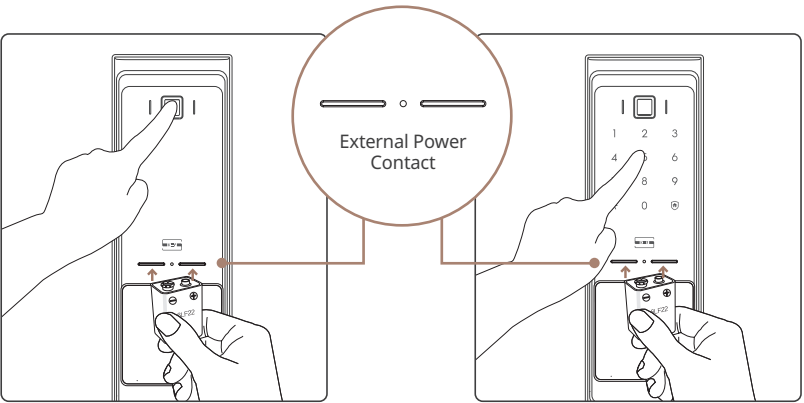
When the door lock is continuously used without replacing the batteries, the door lock may not operate normally due to a lack of battery power. In this case, emergency power or mechanical override may be used to open the door.

Emergency Power

Purchase 6LF22 alkaline battery (9V) from a convenience store or electrical shop nearby. Connect the 9V battery to the power input of the exterior unit, wait for 20 seconds after the beeping sound goes off, and perform authentication (fingerprint / password / keytag) to open the door by disabling the door lock.

Mechanical Override

Mechanical override can be used to open the door by disabling the door lock when the door lock no longer operates due to lack of battery power or other circuit errors. Insert the mechanical override in the mechanical override hole at the bottom of the exterior unit and turn the key left and right to open the door.



| | |
|----------------|--|
| Caution | • Keep the mechanical override at a safe location outside of the house for unforeseen circumstances. (Vehicle, office, etc.) |
|----------------|--|



GC68-02597A

SHP-R80

User Manual

Table of Contents

| | |
|--|---|
| Components | 1 |
| Names and functions | 2 |
| Open door from outside | 3 |
| Open / Close door from inside | 4 |
| Register authentication method (password / fingerprint / keytag) and install app | 5 |
| Additional functions and setting method | 6 |
| How to use security function | 7 |
| Initialization | 8 |
| How to replace the battery and open the door during an emergency | 9 |

※ Color may be added and specifics will be determined by future policy.

homeiot.zigbang.com



Safety Caution

⚠ NOTE: The list of safety caution protects the safety of users and prevents property damage from accidents and usage inconvenience. Please read and comply with the following safety caution.

- Do not install or repair this product without permission.
- The gap between the door and door frame should not exceed 5 mm during installation.
- Fracture in the door lock touchpad may result in an environment where the door lock is exposed to direct sunlight for a long period of time. Avoid the environment from being exposed to direct sunlight when installing the door lock.
- Do not apply excessive force or press the door lock button with sharp tools.
- Do not operate this product with wet hands, and do not let liquids, such as water and beverage, infiltrate the product.
- Wipe the lock with soft and dry cloth, and do not wipe this product with water, benzene, alcohol, etc.
- Check whether the door is completely locked when leaving home.
- Manage the password carefully and regularly change the password to prevent password leak.
- Insert the batteries accurately according to the terminal (+/-) of the battery.
- Be mindful that battery leak or rupture may result from inserting the batteries at opposite terminals (+/-).
- Battery consumption may vary depending on the wireless communication environment. Battery use time may decrease if the communication environment is unfavorable.
- Wireless radio waves or another device may cause interference when using this product.
- Wireless radio wave interference may take place during operation of the wireless device of this product, and this results in suspension of human safety-related services.
- Product performance may suffer if used in an environment with high humidity.
- Maintain at least 20 cm of distance from the product when using the product.
- A fee may be incurred for defects caused by the customer during installation.
- It is recommended to install the product through an installation engineer.
- User Manual may be changed to improve product performance without prior notice to users.
- Images in this User Manual may change and the color of the product may differ from the actual product.

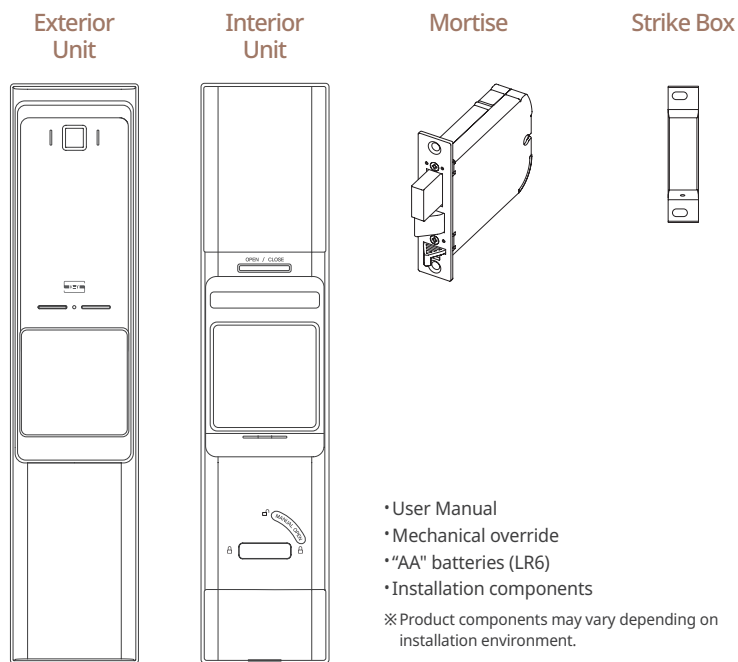
⚠ NOTE: More than one mechanical override must be stored in other places or carried by the user.

⚠ NOTE: This door lock does not require a key. A product failure may result in partial functional damage.

The user must be well acquainted with the use of the manual door lock in case of unforeseen circumstances.

※ The company reserves the right to change the contents of the user manual without notice in advance to upgrade product functionality.

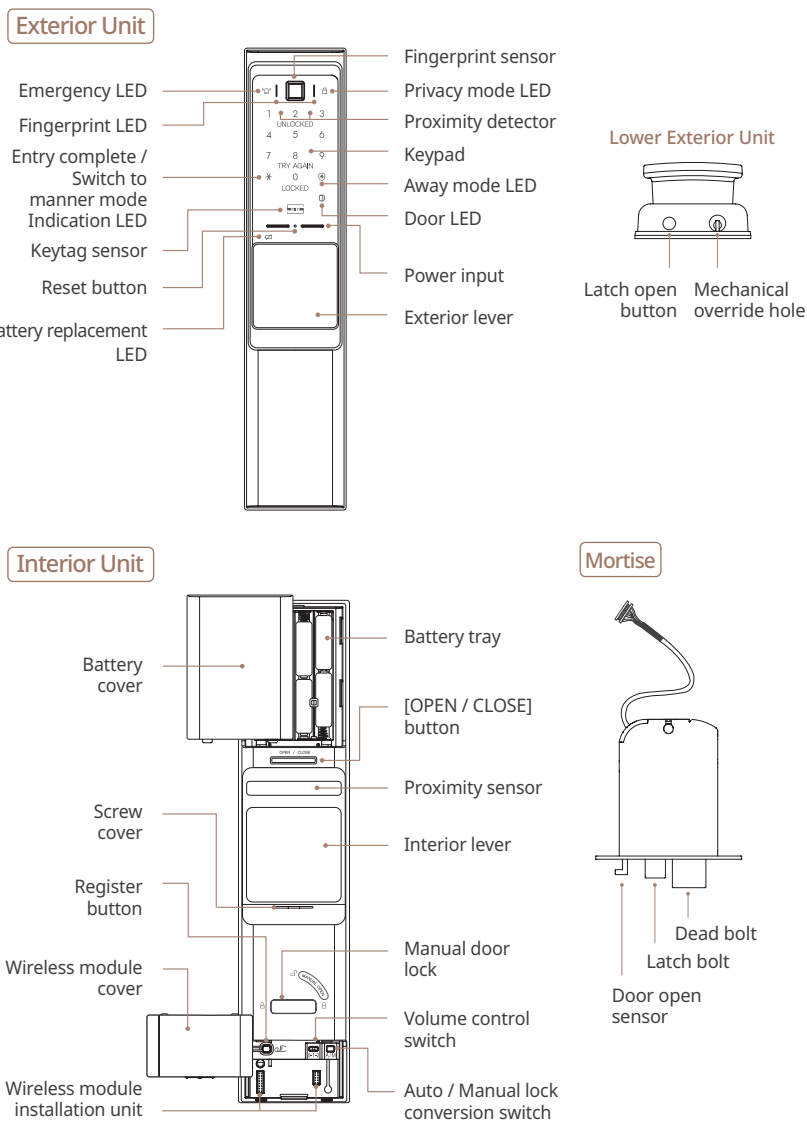
1 Components



Product specifications

| Item | Specifications |
|-------------------------------|--|
| Rated voltage | 4, AA 1.5V alkaline batteries (LR6) (DC 6 V) |
| Emergency Power | 1, 9V battery (6LF22) (to be purchased separately) |
| Entry method | Fingerprint, password, keytag, NFC, Wi-Fi, mobile key, mechanical override |
| Weight | 4.8Kg |
| Product size (Includes lever) | [Exterior] 88(W) × 400(H) × 60(D)mm |
| | [Interior] 88(W) × 400(H) × 63(D)mm |

2 Names and functions



3 Open door from outside

Fingerprint

The door opens when the registered fingerprint accurately makes contact with the fingerprint sensor.

Master Password & User Password

1 Stand close to the door lock and then press the two random digits displayed. (Randomizer function)

2 When all buttons on the keypad are displayed, enter your password (4~12 digits) and then press [*] to open the door.

TIP User manner function (sound muted) to open door

Press [*] button when temporarily turning off the sound in the evening and enter password to mute the sound.

- References**
- Enter the password when the keypad is turned on. If the keypad is turned off, touch the keypad to turn on the keypad and then enter the password.
 - Error alarm is triggered and the door lock operation is suspended for 3 minutes after entering an incorrect password 5 times. You can enter the accurate password to open the door once the door lock suspension disarming alarm is triggered by the door lock system after 3 minutes.
 - Press the Security (Ⓢ) button when canceling entry after entering an incorrect password to re-enter the accurate password.

Keytag/Mobile Key

The door opens when a registered keytag or mobile key (smartphone) accurately makes contact with the fingerprint sensor.

- References**
- Touch the keypad when the welcome function has been disabled and then place the mobile key on the sensor to open the door.
 - You can open the door with mobile key after installing the door lock app and requesting for the service.
 - Mobile key door open function only supports Android mobile phones and devices equipped with NFC USIM card.
 - You can use the mobile key to open the door only when the smartphone screen is on.
 - Refer to user guide provided in the app for details.

4 Open / Close door from inside

Use According to the User's Preference.

Open by touching the interior lever

By touching the interior lever, the proximity sensor detects the operation and the LED of the [OPEN / CLOSE] button turns green. Lightly push the lever to open the door.

- References**
- The interior lever is set as "touch mode" by default.
 - Set single-touch mode: It operates by touching only one area (left / right / top / center of the lever).
 - Set multi-touch mode: It operates by touching two or more areas (left / right / top / center of the lever).
 - Deactivate touch mode: It deactivates the interior lever touch mode.
 - The door may not open just by touching the lever with other objects (e.g. glove, paper box) or by holding the bottom part of the lever.

Caution Make sure the proximity sensor is clean to open the door by touching the interior lever. If there is any foreign material on the sensor, the interior lever may not operate normally.

Open by pressing the [OPEN / CLOSE] button

Press the [OPEN / CLOSE] button on the interior unit to open the door.

Open by using the manual door lock

Turn the manual door lock to [Ⓛ] to open the door.

Close Door

Auto lock (A)

The door is automatically locked when closed. (Default)

Manual lock (M)

The door is unlocked even after being closed for unrestricted access. (Party, moving, etc.)

TIP How to Configure Auto / Manual Lock

Open the battery cover on the interior unit. Configure with [Auto / Manual Lock] conversion switch.

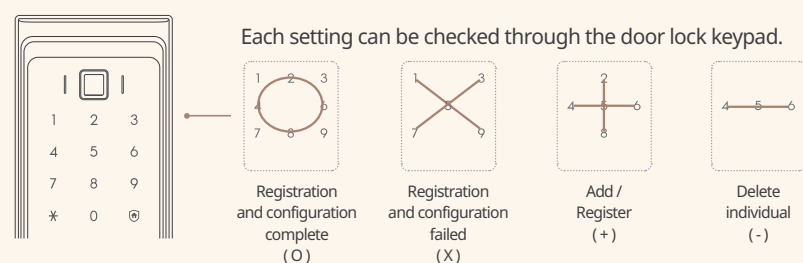
- Caution**
- After enabling manual lock mode, the door can only be locked if the [OPEN / CLOSE] button is pressed from the inside or if the keypad is pressed from the outside.
 - Regardless of the manual lock mode configuration, the door is automatically locked if the door is not opened within 7 seconds after disabling the lock.

5 Register authentication method

The user can only register the authentication method when the door is open. After opening the wireless module cover on the interior unit, press the [Register] button shortly and the voice guidance for "authentication management" will be played. Register the authentication mode according to the voice guidance.

- ※ Registration mode is activated for 60 seconds by default and the door does not lock even if it is closed within 60 seconds.
- ※ Read the caution when registering authentication mode. It is recommended to only register when there is a person present inside the house.
- ※ Registration mode is terminated automatically when an incorrect password has been entered. The user can register again after pressing the [Register] button.

Press the [Register] button on the interior unit if you have to suspend registration before completion.



Registration Mode

Enter registration mode and then register authentication method (password, keytag, fingerprint) according to the voice guidance. ※ Registration mode is maintained for 60 seconds by default and the door does not lock even if it is closed within 60 seconds.

- 0 * Change master password mode
- 1 * Register user password mode
- 2 * Register keytag mode
- 3 * Register fingerprint mode

TIP How to easily open the wireless module cover
Press the middle part at the bottom of the wireless module cover located at the bottom of the interior unit and pull the cover.

Change Master Password

You can enter 4~12 digits for the password, and you can only register a single master password. Default password is "1234". ※ You must change the password after installing the product.

- 0 * New master password *

- References**
- Press the number before pressing the [*] button to listen to the instructions again.
 - To check whether the password has been registered normally, press the [Register] button, then press the password and [*] button to check whether it enters to the registration mode.
 - Close the door after checking whether the password has been changed normally.

- Caution**
- The user will hear a voice alarm that says "Change the default password" when opening the door using the default password "1234."
 - Set the password with more than 6 digits to prevent break-ins. (Only numbers 0 to 9 may be used)
 - Make sure that the password is secure. Change the password regularly as using the same password for a long time may increase the risk of being leaked.
 - The password cannot be deleted. Register a new password to change to a new one.
 - In case of failing to check the changed password, reset the password by initializing the key information, then change the password again.

Register (Add) User Password / Delete Individual User Password / Delete All User Passwords

You can register up to 100 keytags including passwords and mobile keys. Registered passwords can be deleted individually or collectively. (4~12 digits)

- Register (Add) 1 * Password
- Delete individual password 2 * Password
- Delete all passwords 3 *

Register (Add) Keytag / Delete Individual Keytag / Delete All Keytags

You can register up to 100 keytags including passwords and mobile keys. Registered keytags can be deleted individually or collectively.

- Register (Add) 1 * Keytags
- Delete individual keytag 2 * Keytags
- Delete all keytags 3 *

- References**
- Press the door open sensor with the door open to artificially close the door, and then open the door with the keytag (whether the dead bolt goes inside the mortise) to check if registration has been completed normally.
 - Close the door after adding or deleting is complete.

- Caution**
- This product only supports keytags provided by Zigbang.
 - Warranty is void if the door lock is malfunctioning from opening the door using alternate authentication method aside from the keytags prescribed by the company.

Register (Add) Fingerprint / Delete Individual Fingerprint / Delete All Fingerprints

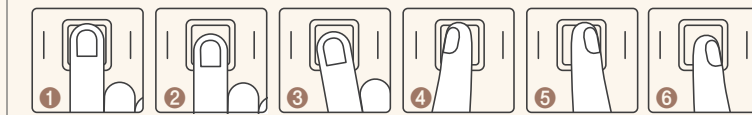
You can register up to 100 fingerprints. Registered fingerprints can be deleted individually or collectively.

- Register (Add) 1 * Fingerprint
- Delete individual fingerprint 2 * Fingerprint
- Delete all fingerprints 3 *

How to Register Fingerprint

Place a finger on the fingerprint sensor to register. Change the angle of the finger 6 times and make contact with the sensor when registering a fingerprint.

※ Number of contacts made by fingerprint appears on the keypad with the 'Ding' sound when registering fingerprint. Register the fingerprints in the same method according to voice guidance when adding fingerprints. Press the [Register] button on the interior unit when registration is complete.



- References**
- It is recommended to register thumbs or index fingers when registering fingerprints.
 - Register the fingerprint for a finger you use often if you wish to improve fingerprint recognition rate.
 - Recognition rate may be low if it is a fingerprint of a child or if the fingerprint is faint (or damaged). Fingerprint may not register or be recognized in such instance.
 - If the surface of the fingerprint is too rough (damaged or bubble present on the finger), fingerprint may not be recognized. Recognition rate may suffer if the finger is too small or thin, or if the finger is bent, or if only the fingertip is used for authentication. You must cover the entire fingerprint sensor with your finger when registering your fingerprint.
 - If the fingerprint sensor or the finger is dirty or wet, try again after wiping.
 - If the surrounding environment is dry, static may occur for the product. In such an instance, avoid using fingerprint recognition or make contact with another metallic object before fingerprint recognition to eliminate static and try again.
 - Be careful not to scratch the fingerprint sensor with coins, keys, necklaces, and other metallic objects.
 - Close the door after checking that the fingerprint has been added or deleted accurately.

Zigbang Smart Doorlock app Installation and registration

When you register a door lock to Zigbang Smart Doorlock app, you can use various IoT services including remote door open, access function, push notification, etc. Android users can search for 'Smart Doorlock' app in Play Store to download and install, and iOS users can search for 'Smart Doorlock' app in the App Store to download and install.

TIP How to Register Wi-Fi

Press [Register] button on the interior unit for 5 seconds to register Wi-Fi.

Register button on the interior unit

- Caution**
- Wi-Fi router must be on to register door lock. When using dual-band router (2.4GHz, 5GHz), you must select 2.4GHz. (5GHz is not supported)
 - Refer to user guide provided by the app for door lock registration method and other service-related matters.