

6 Additional functions and setting method

Dual Authentication Function

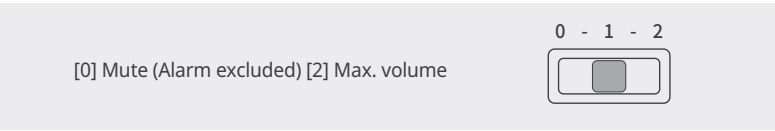
When configured, the user must consecutively authenticate both password and keytag to open the door, and the security system is reinforced through this configuration. Dual authentication mode can only be configured (enabled) when more than one keytag has been registered. Dual authentication function is set to Off by default for the door lock system.

Auto Lock Time Setting Function

Auto lock time can be configured and auto lock time can be adjusted as necessary. Auto lock time is set to 1 second by default, and it can be set from 1 second to 9 seconds.

Volume Settings

You can configure the volume for system sound, keypad entry sound, etc. when opening the door. Open the battery cover on the interior unit to adjust volume through the volume control switch, and it is configured at [1] by default.



Refer to the following table to configure or disable other additional functions.

Open the battery cover on the interior unit and press [Register] button. Press the security button () on exterior keypad to enter configuration mode. Refer to the following table, select a function to use and press the **Register button on the interior unit to suspend configuration before completion.**

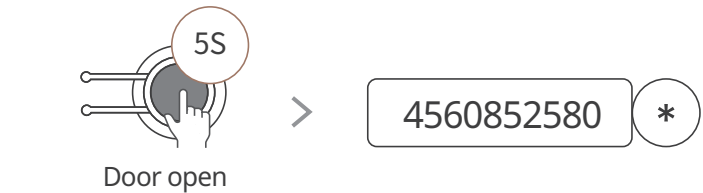
※ Door is not locked even if the door has been closed within default time (within 1 minute) in configuration mode.

To activate Randomizer	> > * > *
To deactivate Randomizer	> > * > *
To activate Dual authentication	> > * > *
To deactivate Dual authentication	> > * > *
Door closing time	> > * > *

7 Initialization

Initialize the key information

Master password is reset to '1234' and all registered passwords, keytags are deleted.



TIP What is reset? It is a function to perform factory reset for all information configured for the door lock.
Caution Password is changed to '1234' after reset. You must change the password afterward.

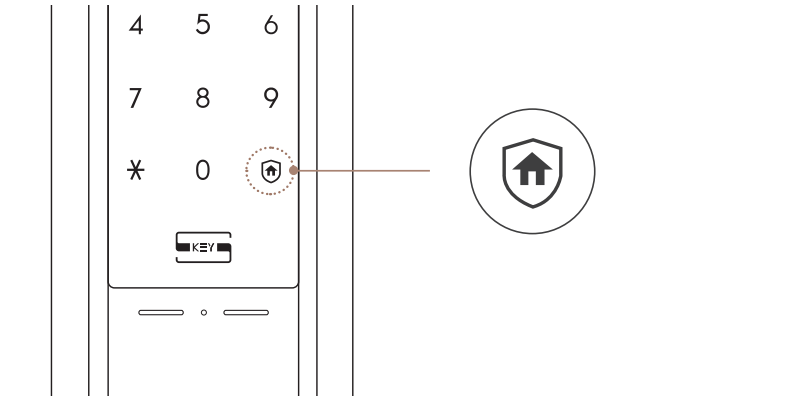
8 How to use security function

Randomizer Function

Enter two random digits displayed and then enter password for authentication to prevent password leak. Randomizer function is set to On by default for the door lock system.

Away mode Function

Away mode button () is turned on when the door is locked after the user leaves the house. Press the away mode button () within 3 seconds to configure (enable) the function. After configuring (turning on), the alarm will be triggered as the external alarm LED flashes when the door is opened from the inside. It is recommended to only use this function when there is no one home.



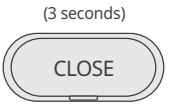
TIP How to Disable Alarm
To disable the alarm, use the registered authentication method (Password/Keytag) to open the door.
Caution When the away mode function is disabled from inside, press the [CLOSE] button on the indoor lock to disarm the current state, and open the door with the handle to easily open the door. (Alarm triggered)

Privacy mode Function

This function is configured when all family members have returned home in the evening, or to protect personal privacy, and it can restrict the door from being opened from the outside. Door lock cannot be opened through any authentication method from the outside when this function is enabled. Be careful not to configure this function when a child is present indoors.

Configure :
Press the [CLOSE] button on the interior unit for 3 seconds with the door lock being locked to enable the function.

Disable :
The function is immediately disabled when the door is opened from the inside.



Anti-Tampering Function

(Door lock operation is suspended for 3 minutes when authentication fails 5 consecutive times.)
The door triggers the alarm when the operated incorrectly from the outside (outdoor), and the door lock operation is suspended. The door lock triggers a failure alarm and its operation is suspended for 3 minutes (cannot be used) after failing authentication 5 times consecutively. (Password, keytag authentication failure).

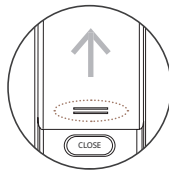
Intrusion Detection Function (※ Default function and cannot be disabled)
The door lock triggers the alarm when the door is forcefully opened from the inside/ outside. The door opening sensor detects an intrusion and the alarm is triggered for 5 minutes when the door is forcefully opened with the door lock being locked.

High Temperature Alarm Function (※ Default function and cannot be disabled)
The alarm system is activated with the temperature sensor reacting to an abnormal increase in indoor temperature (approx. 60°C +/-10°C). LED on the [CLOSE] button on the interior unit flashes as the alarm is triggered for 15 seconds. The door lock is automatically disabled after the alarm is turned off. (The door lock is restored to normal operational state when the indoor temperature drops to a certain temperature)

9 How to replace the battery and open the door during an emergency

Battery Replacement

Replace the batteries immediately if the alarm melody rings after the battery replacement alarm (LED) is turned on. Continuing to use without replacing the batteries on time may result in the door lock shutting down due to lack of battery power. Replace the batteries by pushing the interior unit cover upwards to remove the cover.



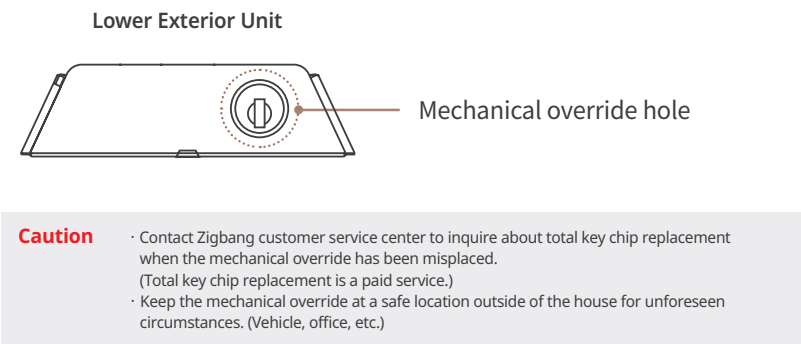
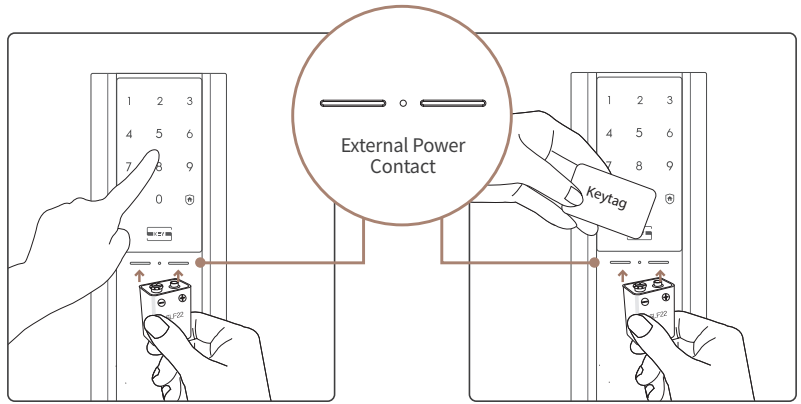
Caution	<ul style="list-style-type: none">· Battery use time may vary depending on the battery manufacturer, manufacturing date, and environment of use. (8 Alkaline batteries (1.5V AA), can be used for 10 months when used 10 times per day)· Regularly check the battery state (6 months is recommended) to prevent damage to product from battery leak.· When the battery replacement alarm is displayed on the door lock, some functions such as enter registration mode, enter configuration mode, etc. may be restricted until the batteries are replaced.
----------------	--

Emergency Door Open

When the door lock is continued to be used without replacing the batteries despite the battery replacement alarm, you won't be able to use the door lock normally due to a lack of battery power. Emergency power(a 9-V battery) or mechanical override may be used to open the door in such an instance.

Emergency Power
Connect a 9-V battery to the external power contact point on the exterior unit, and perform authentication (password/keytag) to open the door.

Mechanical Override
Mechanical override can be used to open the door when the door lock no longer operates due to lack of battery power or other circuit errors. Insert the mechanical override in the mechanical override hole at the bottom of the exterior unit and turn the key left or right to open the door.



GC68-02599A

SHP-DH537 User Manual

Table of Contents

Components	1
Names and functions	2
Open door from outside	3
Open/Close door from inside	4
Register authentication method (password/keytag)	5
Additional functions and setting method	6
Initialization	7
How to use security function	8
How to replace the battery and open the door during an emergency	9

※ Color may be added and specifics will be determined by future policy.

homeiot.zigbang.com

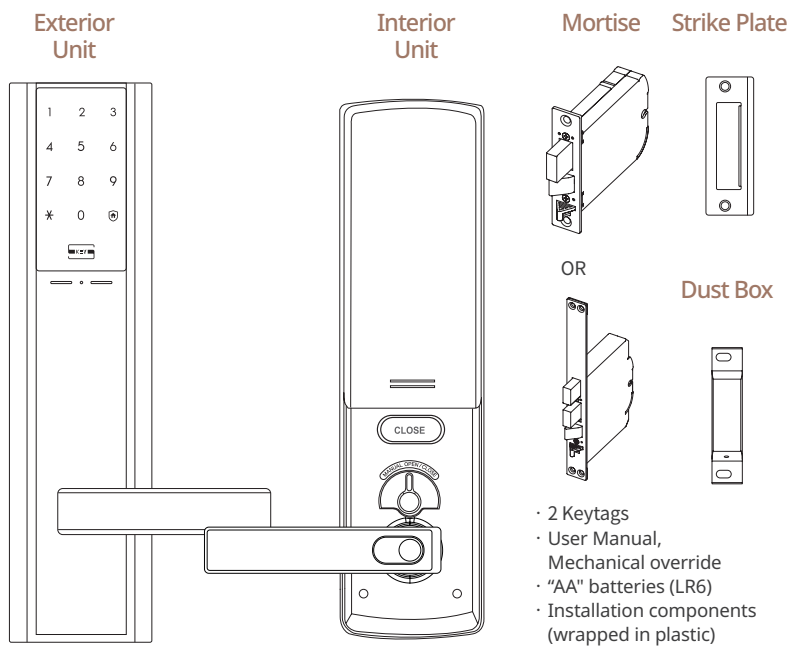
Safety Caution

! Safety caution protects the safety of users, and prevents property damage from accidents and usage inconvenience. Please read and comply with the following safety caution.

- Do not install or repair this product without permission.
- The gap between the door and door frame should not exceed 5mm during installation.
- Fracture in the door lock touchpad may result in an environment where the door lock is exposed to direct sunlight for a long period of time. Therefore, avoid the environment from being exposed to direct sunlight for installing the door lock.
- Do not apply excessive force or press the door lock button with sharp tools.
- Do not operate this product with wet hands, and do not let liquids such as water and beverage to infiltrate the product.
- Wipe the lock with soft and dry cloth, and do not wipe this product with water, benzene, alcohol, etc.
- Check that the door is completely locked when leaving home.
- Manage your password carefully and regularly change your password to prevent password leak.
- Insert the batteries accurately according to the terminal (+/-) of the battery.
- Be mindful that battery leak or rupture may result from inserting the batteries at opposite terminals (+/-).
- Battery consumption may vary depending on the wireless communication environment. Battery use time may decrease if the communication environment is unfavorable.
- Wireless radio waves or another device may cause interference when using this product.
- Wireless radio wave interference may take place during operation of the wireless device of this product, and this results in suspension of human safety-related services.
- Product performance may suffer if used in an environment with high humidity.
- Maintain at least 20cm of distance from the product when using the product.

※The company reserves the right to change the contents of the user manual without notice in advance to upgrade product functionality.

1 Components

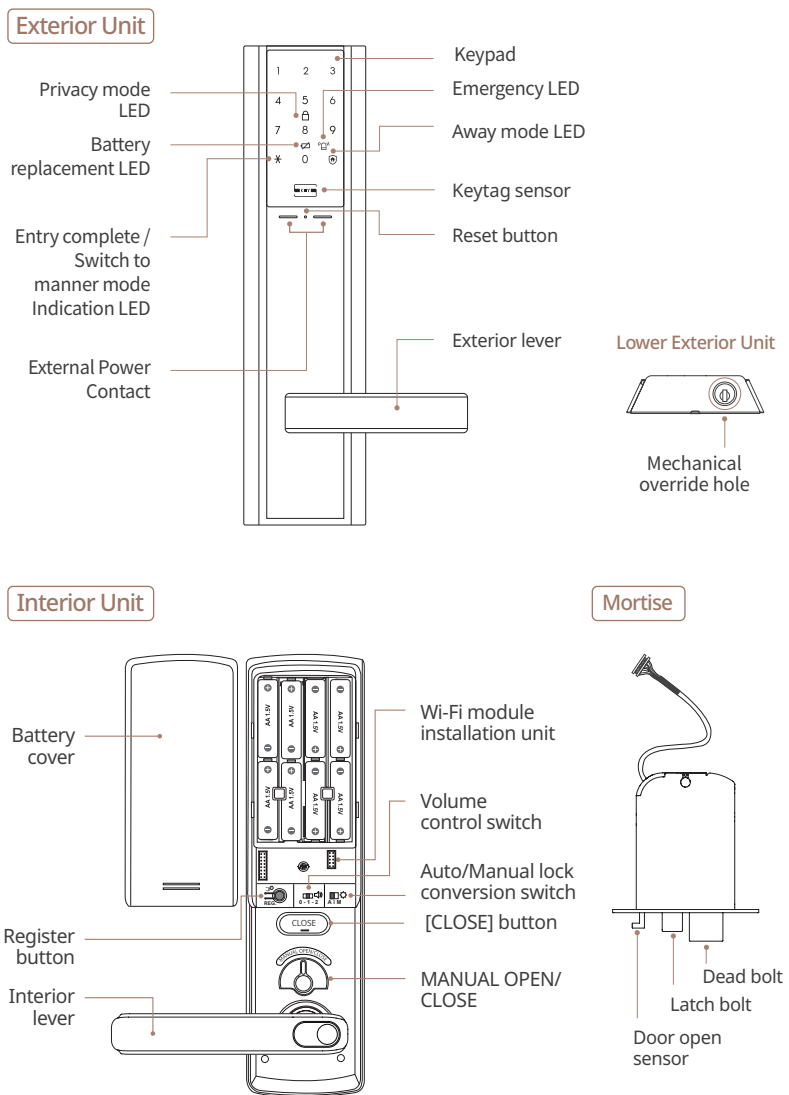


※ Product components may vary depending on installation environment.

Product specifications

Item	Specifications
Rated voltage	4 AA 1.5V alkaline batteries (LR6) (DC 6V)
Emergency Power	One 9 V battery (6LF22) (separately sold)
Entry method	Keytag, password, Mechanical override
Weight	2.7Kg (includes exterior unit, interior unit, and mortise)
Product size (Includes lever)	[Exterior] 81.8(W) x 320(H) x 66.8(D)mm [Interior] 79(W) x 290(H) x 80.3(D)mm

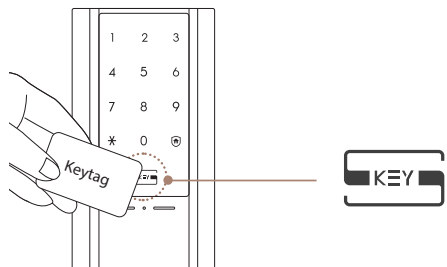
2 Names and functions



3 Open door from outside

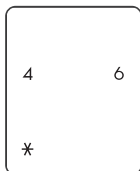
Keytag

The door opens when a registered keytag accurately makes contact with the keytag sensor.



Master Password & User Password

- 1 Touch the keypad of door lock and then press the two random digits displayed. (Randomizer function)
- 2 When all buttons on the keypad are displayed, enter your password (4~12 digits) and then press [*] to open the door.



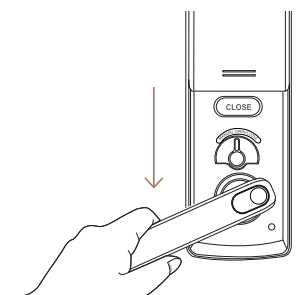
TIP User manner function (sound muted) to open door
Press [*] button when temporarily turning off the sound in the evening and enter password to mute the sound.

- References**
- Enter the password when the keypad is turned on. If the keypad is turned off, touch the keypad to turn on the keypad and then enter the password.
 - Error alarm is triggered and the door lock operation is suspended for 3 minutes after entering an incorrect password 5 times. You can enter the accurate password to open the door once the door lock suspension disarming alarm is triggered by the door lock system after 3 minutes.
 - Press the [Security] (⊙) button when canceling entry after entering an incorrect password to re-enter the accurate password.

4 Open/Close door from inside

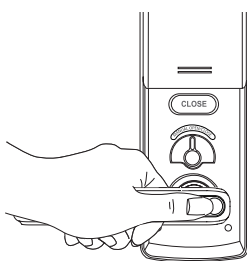
Open Door

Open the door while the fixing button is pressed



Pull down the handle to open the door.

Open the door while the fixing button is not pressed



Press the safe handle button, and pull down the handle to open the door.

Close Door

Auto lock (A)

The door is automatically locked when closed. (Default)

Manual lock (M)

The door is not locked even after being closed for unrestricted access. (Party, moving, etc.)

TIP How to Configure Auto/Manual Lock
Open the battery cover on the interior unit. Configure with [Auto/Manual Lock] conversion switch.



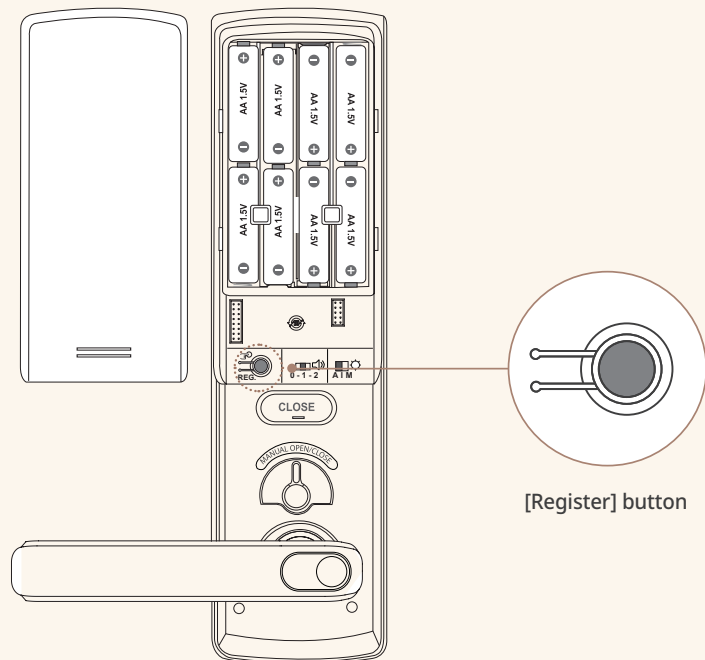
- Caution**
- After enabling manual lock mode, the door can only lock if the [CLOSE] button is pressed from the inside or if the keypad is pressed from the outside.
 - Regardless of the manual lock mode configuration, the door is automatically locked if the door is not opened within 7 seconds after disabling the lock.

5 Register authentication method

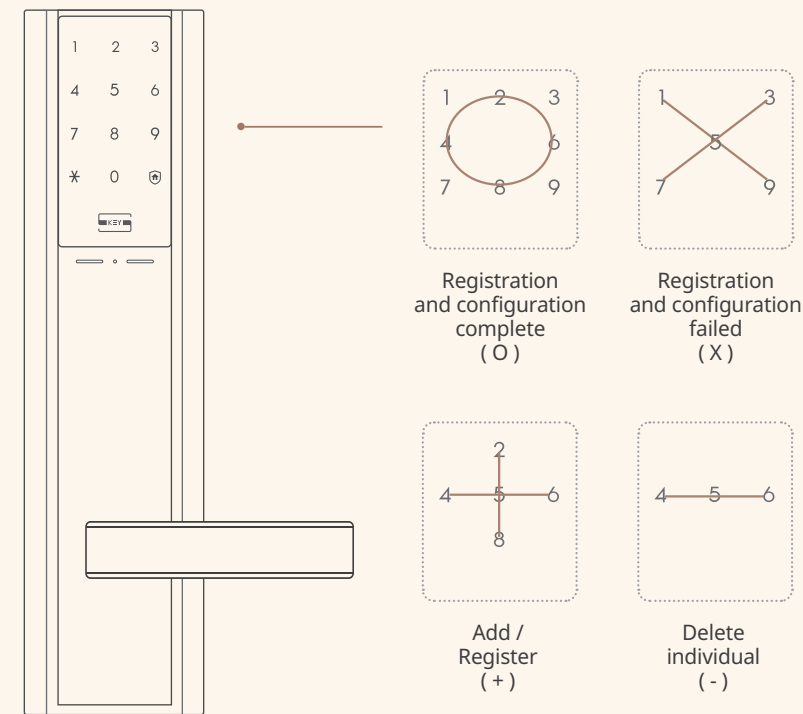
You can only register the authentication method when the door is open. After opening the battery cover on the interior unit, press [Register] button and enter the master password. Then press [*] button to enter registration mode.

- ※ Read the caution for registering authentication mode, and it is recommended to only register when there is a person present inside the house.
- ※ Registration mode is terminated automatically when incorrect password has been entered, and you can register again after pressing the [Register] button.

Press the [Register] button on the interior unit if you have to suspend registration before completion.



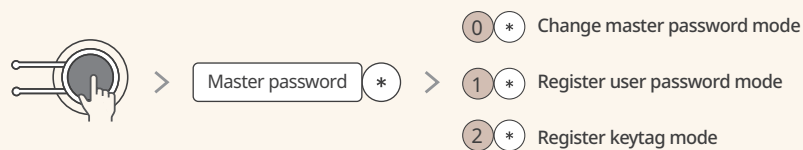
Each setting can be checked through the door lock keypad.



Registration Mode

Enter registration mode and then register authentication method (password, keytag) according to the user manual.

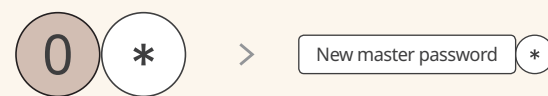
※ Registration mode is maintained for 60 seconds by default and the door does not lock even if it is closed within 60 seconds.



Change Master Password

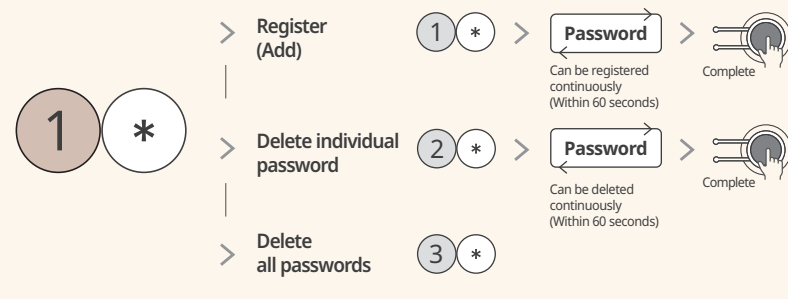
You can enter 4~12 digits for the password, and you can only register a single master password. Default password is "1234".

※ You must change the password after installing the product.



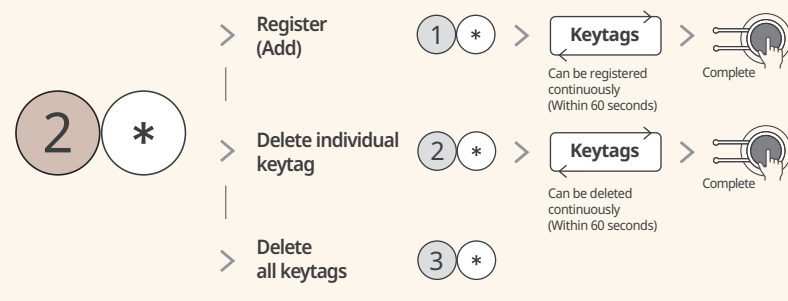
Register (Add) User Password / Delete Individual User Password / Delete All User Passwords

You can register up to 100 passwords including keytags. Registered passwords can be deleted individually or collectively. (4~12 digits)



Register (Add) Keytag / Delete Individual Keytag / Delete All Keytags

You can register up to 100 keytags including passwords. Registered keytags can be deleted individually or collectively.



- References**
- Press the door open sensor with the door open to artificially close the door, and then open the door with the keytag (whether the dead bolt goes inside the mortise) to check if registration has been completed normally.
 - Close the door after adding or deleting is complete.

Caution

- This product only supports keytags provided by Zigbang.
- Warranty is void if the door lock is malfunctioning from opening the door using alternate authentication method aside from the keytags prescribed by the company.